

# The El Niño – La Niña cycle and recent trends in supply and demand of net primary productivity in African drylands

A. M. Abdi<sup>1</sup> · A. Vrieling<sup>2</sup> · G. T. Yengoh<sup>3</sup> ·  
A. Anyamba<sup>4</sup> · J. W. Seaquist<sup>1</sup> · C. C. Ummenhofer<sup>5</sup> ·  
J. Ardö<sup>1</sup>

Received: 1 January 2016 / Accepted: 21 June 2016  
© Springer Science+Business Media Dordrecht 2016

**Abstract** Inter-annual climatic variability over a large portion of sub-Saharan Africa is under the influence of the El Niño-Southern Oscillation (ENSO). Extreme variability in climate is a threat to rural livelihoods in sub-Saharan Africa, yet the role of ENSO in the balance between supply and demand of net primary productivity (NPP) over this region is unclear. Here, we analyze the impact of ENSO on this balance in a spatially explicit framework using gridded population data from the WorldPop project, satellite-derived data on NPP supply, and statistical data from the United Nations. Our analyses demonstrate that between 2000 and 2013 fluctuations in the supply of NPP associated with moderate ENSO events average  $\pm 2.8 \text{ g C m}^{-2} \text{ yr}^{-1}$  across sub-Saharan drylands. The greatest sensitivity is in arid Southern Africa where a  $+1 \text{ }^\circ\text{C}$  change in the Niño-3.4 sea surface temperature index is associated with a mean change in NPP supply of  $-6.6 \text{ g C m}^{-2} \text{ yr}^{-1}$ . Concurrently, the population-driven trend in NPP demand averages  $3.5 \text{ g C m}^{-2} \text{ yr}^{-1}$  over the entire region with densely populated urban areas exhibiting the highest mean demand for NPP. Our findings highlight the importance of accounting for the role ENSO

---

**Electronic supplementary material** The online version of this article (doi:10.1007/s10584-016-1730-1) contains supplementary material, which is available to authorized users.

---

✉ A. M. Abdi  
hakim.abdi@gmail.com

<sup>1</sup> Department of Physical Geography and Ecosystem Science, Lund University, Sölvegatan 12, 22362 Lund, Sweden

<sup>2</sup> Faculty of Geo-information Science and Earth Observation, University of Twente, P.O. Box 217, 7500 AE Enschede, The Netherlands

<sup>3</sup> Lund University Center for Sustainability Studies, 22362 Lund, Sweden

<sup>4</sup> Goddard Space Flight Center, Biospheric Sciences Laboratory, National Aeronautics and Space Administration, Greenbelt, MD, USA

<sup>5</sup> Department of Physical Oceanography, Woods Hole Oceanographic Institution, Woods Hole, MA, USA

plays in modulating the balance between supply and demand of NPP in sub-Saharan drylands. An important implication of these findings is that increase in NPP demand for socio-economic metabolism must be taken into account within the context of climate-modulated supply.

**Keywords** Sub-Saharan Africa · Drylands · El Niño-southern oscillation · Net primary productivity · Climate variability

## 1 Introduction

Drylands cover more than half of sub-Saharan Africa and are characterized by a combination of low rainfall and high potential evapotranspiration that leads to low levels of soil moisture and net primary productivity (NPP) (Nicholson 2011). In these regions, climatic variability is one of the most acute and widespread threats to the agro-pastoral systems that are inhabited by 60 % of the population (IPCC 2014). Most of sub-Saharan Africa has one rainy season (East Africa has two) that is modulated by large-scale ocean-atmosphere teleconnections. The largest of these, the El Niño-Southern Oscillation (ENSO), has been identified as a dominant factor that regulates inter-annual photosynthetic activity in global drylands (Ahlström et al. 2015). The two extreme phases of ENSO, El Niño and La Niña, represent positive and negative departures, respectively, from long term mean sea surface temperatures in the central and eastern equatorial Pacific Ocean. El Niño generally brings dry conditions to parts of the Sahel and most of Southern Africa, and wet conditions to Eastern Africa, while La Niña is associated with approximately opposite conditions (Giannini et al. 2008). These dry or wet conditions are exacerbated in severe El Niño or La Niña events, causing droughts or floods that reduce the amount of NPP in a given area. The most recent example of the impact of a severe El Niño is the 2015/16 drought in Southern Africa, where the October 2015 – March 2016 rainfall was 75 % below the 1982–2011 average (FEWSNET 2016). The 2011/12 famine in the Horn of Africa exemplifies a confluence of risk factors, such as political instability, armed conflict and inaccessibility, exacerbated by La Niña. The strong La Niña of 2010/11 (Supplementary Fig. 2) induced the failure of both the short rains in late 2010 and the long rains in mid-2011, causing collapses in both agricultural production and the associated labor market in Somalia (Maxwell and Fitzpatrick 2012).

NPP supplies the annual provision of crops, animal feed and pasture, and adds to annual increments of woody biomass (Running 2012). The societal implications of reduced NPP can be severe and could lead to crop failure and eventual food insecurity (Battisti and Naylor 2009). Sub-Saharan Africa has experienced a steep increase in demand for NPP in the twentieth century, which is likely to continue rising as a function of population growth and per capita consumption (Fetzel et al. 2016). Furthermore, recent studies predict an 11.7 % decrease in the productivity of major sub-Saharan crops (wheat, maize, sorghum and millet) by the 2050s (Knox et al. 2012), expansion of drylands, particularly in the Sahel, East and Southern Africa (Greve et al. 2014), and an increased frequency of severe ENSO events (Cai et al. 2015). Thus, the effects of extreme climatic variability could have drastic impacts on NPP supply and intensified by the need to keep pace with an increasing population (Campbell et al. 2014).

Here, we adopt the concepts of “supply” and “demand” to demonstrate the linkage between ecosystem productivity, human livelihood, and inter-annual climatic variability in sub-Saharan drylands. As demand for food, feed and fuel drives land use change, the proportion of NPP

required by humans relative to its supply (demand-supply ratio, DSR) could serve as an integrative benchmark of human dependence on ecosystems. We focus on ENSO and investigate its role in the balance between supply and demand of NPP in sub-Saharan drylands using a spatially explicit framework. We focus on the time period between 2000 and 2013 for NPP supply and 2000–2011 for NPP demand and DSR. The shorter time period for NPP demand and DSR is due to the fact that data on domestic supply quantities for several items, such as crops and woodfuel, were limited to 2011 at the time of writing. Our specific aims are to (1) quantify trends in NPP supply and demand in sub-Saharan drylands for 2000–2011; (2) map the spatial variability of NPP and DSR anomalies during ENSO years for 2000–2011; (3) assess the relationship between ENSO and NPP supply for 2000–2013.

## 2 Data and methods

### 2.1 Derivation of NPP supply

The estimation of NPP supply was performed using the light use efficiency approach as defined in Monteith (1972) and applied in the MOD17 algorithm of the moderate-resolution imaging spectroradiometer (MODIS) sensor on board the Terra and Aqua satellites:

$$NPP_{\text{Supply}} = (PAR * FPAR * \varepsilon_{\text{max}} * VPD * T_{\text{min}}) - Ra \quad (1)$$

where  $NPP_{\text{Supply}}$  is the NPP available in the ecosystem regardless of land use type in grams of carbon per meter square per year ( $\text{g C m}^{-2} \text{ yr}^{-1}$ ); PAR is incoming photosynthetically active radiation in megajoules per meter square per year ( $\text{MJ m}^{-2} \text{ yr}^{-1}$ ); FPAR is the fraction of incident PAR absorbed by the vegetation canopy;  $\varepsilon_{\text{max}}$  represents maximum light use efficiency, in grams of carbon per megajoule of PAR ( $\text{g C MJ}^{-1}$ ), under hypothetical biome-specific ideal conditions; VPD and  $T_{\text{min}}$  are simple linear ramp functions of vapor pressure deficit and minimum temperature, respectively, which constrain maximum light use efficiency; Ra (autotrophic respiration) represents the amount of carbon respired, in  $\text{g C m}^{-2} \text{ yr}^{-1}$ , during maintenance and growth respiration of leaves, fine roots and woody tissue. Further descriptions of the MOD17 algorithm are detailed in Zhao et al. (2011) and the dataset is available from the NASA Earth Observation System repository at the University of Montana (<http://www.ntsg.unt.edu/project/mod17>). NPP supply estimates were restricted to sub-Saharan Africa's arid, semi-arid and dry sub-humid areas (Supplementary Fig. 1).

### 2.2 Niño-3.4 index and standardized anomalies

We used the Niño-3.4 sea surface temperature index as a representation of ENSO. To differentiate between positive, negative and neutral ENSO years, we applied the threshold set by the National Oceanic and Atmospheric Administration. Accordingly, an ENSO year is characterized by a minimum of five consecutive 3-month running mean of the Extended Reconstructed Sea Surface Temperature version 3b (ERSST.v3b) anomalies in the Niño 3.4 region based on a threshold of  $\pm 0.5$  °C (Supplementary Fig. 2). The base period for computing the anomalies in ERSST.v3b is 1971–2000. To visualize differences in NPP between the three ENSO phases (El Niño, La Niña, Neutral), standardized anomalies (Z-scores) were calculated for

NPP supply and DSR using Eqs. 2–4. The ENSO cycle begins around July, peaks in December – February (of the following year), starts to decay in March – April, and enters the post-phase in May – June (Philippon et al. 2014). The monthly NPP supply anomalies reflect this July to June cycle and were summed to annual values spanning two calendar years (1999/00, 2000/01, 2001/02, etc.). However, the data used to compute NPP demand are provided in single calendar years (2000, 2001, 2002, etc.). Therefore, DSR anomalies correspond to the years in the second half of the ENSO cycle to account for the lagged effect of the peak and decay phases of ENSO.

$$Z_{El\_Ni\ o} = \sum_{t=1999/00}^{2010/11} \frac{OBS_{NPP,t} - MN_{NPP,t}}{SD_{NPP,t}}, \text{ if } Nino3.4_t \geq +0.5 \tag{2}$$

$$Z_{La\_Nia} = \sum_{t=1999/00}^{2010/11} \frac{OBS_{NPP,t} - MN_{NPP,t}}{SD_{NPP,t}}, \text{ if } Nino3.4_t \leq -0.5 \tag{3}$$

$$Z_{Neutral} = \sum_{t=1999/00}^{2010/11} \frac{OBS_{NPP,t} - MN_{NPP,t}}{SD_{NPP,t}}, \text{ if } -0.5 < Nino3.4_t < +0.5 \tag{4}$$

where,  $OBS_{NPP,t}$ ,  $MN_{NPP,t}$ ,  $SD_{NPP,t}$  are the observed, mean, and standard deviation, respectively, of NPP supply, demand or DSR at time  $t$ .

### 2.3 Derivation of NPP demand

We define the term “consumption” as the actual amount of NPP extracted from the ecosystem as reported in the statistical database of the Food and Agriculture Organization of the United Nations (FAOSTAT, <http://faostat3.fao.org/>). The term “demand” is defined as the annual amount of NPP required by the sub-Saharan dryland population. Building on earlier work (Abdi et al. 2014), we developed a framework based on FAOSTAT to calculate demand for NPP (Supplementary Fig. 3). We downloaded data from 2000 to 2011 for the components of NPP demand for each country from the food balance sheets provided by FAOSTAT. However, contrary to Abdi et al. (2014), who used the total primary crop production of each country, we used domestic supply quantities to account NPP supply for domestic utilization.

The first component of NPP demand is domestically consumed food ( $NPP_{food}$ ). This category includes twenty-seven types of regionally important primary crops, which represent 95 % of all those that are domestically consumed by most of the countries in the study area (Supplementary Table 2) (FAOSTAT 2015). Additionally, meats sourced from six types of domestic animals (cattle, goats, sheep, pigs, camels, poultry) and two non-meat animal products (eggs and milk) (Supplementary Table 1) were also included.

$$NPP_{food} = \left[ \overbrace{\left( \sum_{p=1}^{27} P_{p,y} + I_{p,y} - E_{p,y} + S_{p,y} \right) \times D_{p,y} \times C_{p,y}}^{Crops} \right] + \left[ \overbrace{\left( \sum_{a=1}^7 M_{a,y} \right) \times K_{a,y} \times 0.45}^{Non-crop} \right] \tag{5}$$

where,  $P$ ,  $I$  and  $E$  are produced, imported and exported quantities of crop type  $p$ , in year  $y$ ;  $S$  is the variation (positive or negative) in the stocks of crop type  $p$ , in year  $y$ ;  $D$  and  $C$  are the crop-

specific dry matter and carbon conversion coefficients, respectively;  $M$  is the wet carcass weight (i.e. without internal organs) of animal type  $a$ , in year  $y$ , and  $K$  is the dry matter intake required to produce that weight, in year  $y$ . We converted crop tonnage to carbon units using the conversion factors provided in Supplementary Tables 1 and 2.

Livestock are assets in sub-Saharan Africa. Pastoralists and agro-pastoralists depend on livestock for nutritional value and economic growth.  $NPP_{feed}$  represents the total amount of animal feed required to sustain the livestock population of the region.

$$NPP_{feed} = \left( \sum_{a=1}^6 T_{a,y} \right) \times R_{a,y} \times 0.45 \tag{6}$$

where,  $T$  is the Tropical Livestock Unit (TLU) for livestock type  $a$ , in year  $y$ ;  $R$  is the annual dry matter requirement as provided in Supplementary Table 3. A ratio of 0.45 was used to convert dry matter into carbon.

Crop residues ( $NPP_{residues}$ ) refer to the parts of the crop that are left over in a field after harvest. Thus, they are not part of the crop yield (i.e. edible seeds, roots, fruits, leaves, or stalks) and vary according to crop type.

$$NPP_{residues} = \sum_{p=1}^{23} H_{p,y} \times 0.45 \tag{7}$$

where,  $H$  is the residue factor (proportion of non-yield contributing crop phytomass) of crop type  $p$ , in year  $y$ . The residue factors applied in Eq. 7 are detailed in Supplementary Table 4.

In most parts of the sub-Saharan Africa household energy demand is met by woodfuels comprising fuel wood and wood charcoal ( $NPP_{fuel}$ ) extracted from the region’s dry woodlands. The demand for woodfuels across sub-Saharan Africa is variable and ranges from 55 % in Senegal (Pires 2003) to over 91 % in Malawi (Zulu 2010), but on average it is approximately 80 % across the study area.

$$NPP_{fuel} = \left( \overbrace{\sum W_{NC,y} \times 0.58 \times 0.45}^{Non-coniferous} \right) + \left( \overbrace{\sum W_{CN,y} \times 0.43 \times 0.45}^{Coniferous} \right) + \left( \overbrace{\sum W_{CH,y} \times 0.75}^{Charcoal} \right) \tag{8}$$

where,  $NC$ ,  $CN$  and  $CH$  represent non-coniferous, coniferous and wood charcoal. Dry matter conversion ratios of 0.58 and 0.43 were applied to the non-coniferous and coniferous fuel wood, respectively, and a ratio of 0.45 to convert dry matter into carbon (Supplementary Table 5). Wood charcoal was directly converted to carbon content by applying a ratio of 0.75 (Supplementary Table 5).

Landscape fires, both natural and anthropogenic, play an important role in sub-Saharan dryland ecosystems. One of the anthropogenic applications of burning in sub-Saharan Africa is to expand cropland area (Andela and van der Werf 2014). Consequently, the amount of NPP lost to support human demand for food is taken into account.  $NPP_{burned}$  represents domestic human-driven NPP loss resulting from burning of both forest and savanna resources.

$$NPP_{burned} = \sum B_y \times 0.45 \tag{9}$$

where,  $B$  is the total amount of dry matter burnt in year  $y$ . The data are presented as dry matter content, therefore a ratio of 0.45 was used to convert dry matter into carbon.

We did not assume a homogeneous per capita consumption within each country due to variations in diet, lifestyle and wealth between urban and rural populations in sub-Saharan Africa. Rather, we applied ratio factors for urban and rural consumption to national sums of each group of products based on statistics from peer-reviewed literature and national household consumption surveys (Supplementary Table 6).

$$NPP_{demand\_urban} = \overbrace{NPP_{food} + NPP_{feed} + NPP_{residues} + NPP_{fuel} + NPP_{burned}}^{Urban} \quad (10)$$

$$NPP_{demand\_rural} = \overbrace{NPP_{food} + NPP_{feed} + NPP_{residues} + NPP_{fuel} + NPP_{burned}}^{Rural} \quad (11)$$

$$NPP_{demand} = NPP_{demand\_urban} + NPP_{demand\_rural} \quad (12)$$

We derived per capita NPP consumption by dividing rural and urban consumption values by each country's rural and urban population. Grids of urban and rural consumption were then merged to produce a single map of total per capita consumption. We used gridded population data from the WorldPop project (<http://www.worldpop.org.uk/>) (Linard et al. 2012), which came in three time slices: 2000, 2005, 2010. We interpolated between these time slices using growth rates from the United Nations Population Division (<http://esa.un.org/unpd/wpp/>) and added an extra year, 2011, to coincide with the FAOSTAT data. We then used the gridded population data as a spatial surrogate to disaggregate per capita demand to grid cells for each year between 2000 and 2011. The years 2012 and 2013 were not included because domestic supply data on food, feed and fuel from FAOSTAT were limited to 2011 at the time of writing. We distinguished urban and rural areas by masking urban extent on the WorldPop grids based on the "Artificial Areas" category in the European Space Agency's GlobCover 2009 land cover map (<https://doi.pangaea.de/10.1594/PANGAEA.787668>).

## 2.4 Statistical analysis

We tested the data (NPP supply, NPP demand) for temporal autocorrelation before identifying the presence or absence of trends because significant first order autocorrelation can inflate trend significance, leading to a Type I error. A two-sided Mann-Kendall trend test was then applied to evaluate the significance of monotonic trends in the supply and demand of NPP (Mann 1945). The null hypothesis is that our supply or demand data are independent and randomly ordered; the alternative hypothesis is that the data possess a monotonic trend in one or more years in the time series. To account for non-normal distributions of the supply and demand of NPP, the nonparametric Theil-Sen estimate of slope was used to measure the magnitude of the linear trend (Wilcox 2012). The null hypothesis is rejected if the test statistic is different from zero at the 5 % level. Mean ( $\mu$ ) trends in supply and demand of NPP were calculated to facilitate comparison between different areas across the continent. To quantify the lagged response of NPP to ENSO forcing, we applied a lagged ordinary least squares regression to monthly NPP and Niño 3.4 index time series. This was done by shifting the time series one month at each lag to a maximum of 12 months over the July – June ENSO lifecycle. For the resultant monthly lags, we combined all significant pixels ( $P < 0.05$ ) using

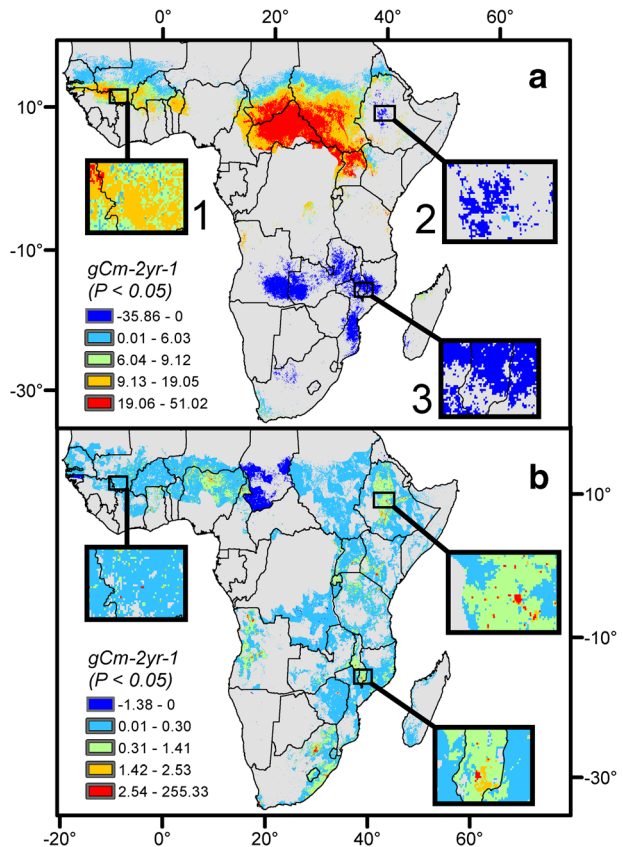
absolute maximum value compositing (i.e. the highest absolute value is retained for each pixel location). We then partitioned the final image according to the GlobCover 2009 land cover types. Pearson’s product-moment correlation was used to quantify the strength of the linear relationship between cropland NPP and FAOSTAT crop production data between 2000 and 2013.

### 3 Results and discussion

#### 3.1 Trends of NPP supply and demand

The linear trends of NPP supply and demand are presented in Fig. 1. NPP supply trends over 2000–2013 are significant in 32 % of the area (4.7 million km<sup>2</sup>). However, the trends are concentrated in three distinct areas: the western Sahel ( $\mu = 2 \text{ g C m}^{-2} \text{ yr}^{-1}$ ,  $P < 0.05$ ), central Africa ( $\mu = 30 \text{ g C m}^{-2} \text{ yr}^{-1}$ ,  $P < 0.05$ ) and parts of Zambia, Malawi and Mozambique ( $\mu = -25 \text{ g C m}^{-2} \text{ yr}^{-1}$ ,  $P < 0.05$ ) (Fig. 1a). By contrast, trends of NPP demand over 2000–2011 are significant in 48 % of the area and roughly evenly distributed (Fig. 1b). The mean overall trend of NPP demand is  $3.5 \text{ g C m}^{-2} \text{ yr}^{-1}$ , though in urban areas it averages approximately  $50 \text{ g C m}^{-2} \text{ yr}^{-1}$ . The tradeoffs between NPP supply and demand trends (i.e. change in one quantity relative to another) are locally constrained and linked to the

**Fig. 1** Linear trends in NPP supply (2000–2013) and demand (2000–2011). NPP supply (a) and NPP demand (b). Detail showing pixel-level supply and demand trends for different urban and rural areas in sub-Saharan Africa: (1) the agricultural region of Sikasso in southern Mali, (2) the Addis Ababa metropolitan area, and (3) southern Malawi within the vicinity of the city of Blantyre. Since the units of NPP supply are generally denoted as quantity per unit area per unit time, and demand generally represents NPP required by the inhabitants in each pixel, we divided each NPP demand pixel in b by its area to facilitate comparability. Grey areas indicate both statistically insignificant ( $P > 0.05$ ) and areas outside the study region





prevailing climate, population growth and net migration. For instance, in the region of Sikasso in southern Mali, the trend of NPP supply averages  $10 \text{ g C m}^{-2} \text{ yr}^{-1}$  (Fig. 1a-1) and that of demand is  $1 \text{ g C m}^{-2} \text{ yr}^{-1}$  (Fig. 1b-1). This region is agriculturally productive and exhibits positive NPP supply anomalies during La Niña (Fig. 2b). The low trend in NPP demand is surprising because the population of Sikasso grew 3.9 % a year between 2000 and 2011 (FAO 2013). This paradox of high land productivity, rapid population growth and low demand for NPP could be a sign that the population is not consuming adequate amounts of food, feed and fuel. Indeed, Eozenou et al. (2013) found that 45 % of the population of Sikasso is classified as “food poor” (i.e. per capita consumption is below the food poverty line) and 19 % are chronically malnourished. Therefore, it is apparent that, despite favorable climatic conditions, agricultural revenues from cotton, the main export crop grown in Sikasso, are insufficient to remove a majority of the region’s population out of poverty.

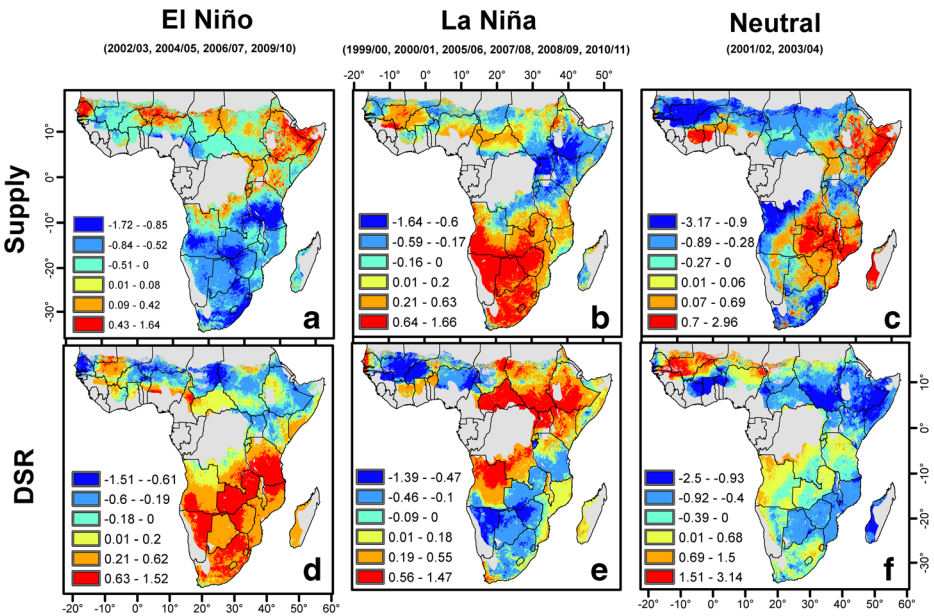
In recent years, major urban areas in sub-Saharan Africa have experienced influxes of economic migrants due to increased investment in infrastructure development (Cheung et al. 2012). Perhaps the best example of this phenomenon is Addis Ababa, Ethiopia. Here, population grew by 40 % between 2000 and 2010 driven by economic migration from other parts of the country (Adugna and Hailemariam 2011; Moller 2012). Consequently, the observed average trend in demand for NPP in the Addis Ababa metropolitan area was  $153 \text{ g C m}^{-2} \text{ yr}^{-1}$  for 2000–2011 (Fig. 1b-2), the highest in sub-Saharan Africa. The observed decrease in NPP supply in the vicinity of Addis Ababa over 2000–2013 (Fig. 1a-2) could be linked to the rapid growth of the city. Itannam and Olsson (2004) found that urbanization and industrialization resulting from Addis Ababa’s rapid expansion contributed to land degradation in surrounding agricultural areas. This adversely affects the livelihoods of farmers prompting further economic migration into the city (Abdissa and Degefa 2011). Several La Niña events in the latter half of the analysis period (2007/08, 2008/09, 2010/11) could have further contributed to the observed decrease in NPP supply around Addis Ababa. The impact of ENSO on seasonal rainfall in Ethiopia, and natural hazards associated with strong ENSO, particularly La Niña events, are well documented (Korecha and Sorteberg 2013). La Niña years are correlated with decreased rainfall during the February – May rainy season, potentially extending the November – January dry season through to June (Korecha and Sorteberg 2013; Reda et al. 2015). Furthermore, strong La Niña events induce intense rainfall during the main June – September rainy season, causing floods and subsequent loss in agricultural productivity (Korecha and Barnston 2007; Wolde-Georgis 2002).

In Malawi, approximately 45 % of the population lives in the southern part of the country (van Vuuren et al. 2011), where the vicinity of the country’s second-largest city, Blantyre, has experienced an overall decrease in NPP supply ( $-11 \text{ g C m}^{-2} \text{ yr}^{-1}$ , Fig. 1a-3) over 2000–2013 and an increase of NPP demand ( $0.80 \text{ g C m}^{-2} \text{ yr}^{-1}$ , Fig. 1b-3). The supply of NPP in this region is highly sensitive to ENSO events (Fig. 2a, b) with a net negative impact. This means that the negative correlation the region has with El Niño outweighs its positive correlation with La Niña (Supplementary Fig. 4). The strong El Niño of 2015/16 reduced the October 2015 – February 2016 rainy season to its lowest level since 1981 (FEWSNET 2016). This severe drought condition caused below average crop production leading to low earnings from agricultural labor and high food prices (FEWSNET 2016).

### 3.2 ENSO in relation to NPP supply and DSR

The standardized anomalies of NPP supply and DSR in El Niño (2002/03, 2004/05, 2006/07, 2009/10), La Niña (1999/00, 2000/01, 2005/06, 2007/08, 2008/09, 2010/11) and neutral

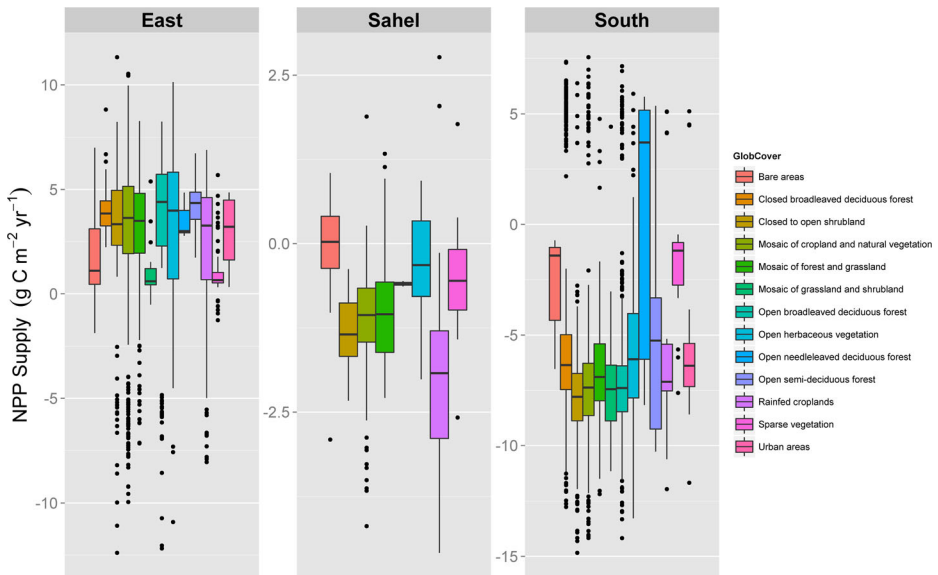




**Fig. 2** Standardized anomalies (2000–2011). Standardized anomalies for NPP supply (a, b, c) and demand-supply ratio (d, e, f). Means were calculated for El Niño (a, d), La Niña (b, e) and neutral years (c, f). For each panel, the anomaly indicates the number of standard deviations an observation is above or below the mean. The ENSO cycle typically straddles two calendar years, beginning around July, with a peak in December – February, and begins to decay in March – April of the following year. The monthly NPP supply anomalies reflect this cycle and were summed to annual values. Since the FAOSTAT data is provided in calendar years, the DSR data reflects that nomenclature. Accordingly, DSR anomalies shown here represent the latter half of the ENSO cycle, e.g. for the ENSO-neutral years of 2001/02 and 2003/04, the corresponding DSR anomalies are the years 2002 and 2003. Grey areas are outside the study region

(2001/02, 2003/04) phases are presented in Fig. 2. Southern Africa shows the largest contiguous region of negative NPP supply anomalies during El Niño (Fig 2a), and consequently also shows the largest positive DSR anomalies (Fig 2d). Demand for NPP is coupled to population growth and consumption patterns, but it is not linked to, nor does it change with, ENSO phases. Consequently, when NPP supply is reduced by El Niño, NPP demand increases relative to it, causing positive DSR anomalies. The opposite effect can be seen during La Niña, when NPP supply anomalies in southern Africa are positive and DSR anomalies are negative. Negative NPP supply anomalies during La Niña are concentrated around equatorial East Africa resulting in positive DSR anomalies (Fig. 2b, e).

The response of NPP supply to ENSO in the Sahel, East and Southern Africa is shown in Fig. 3. The greatest sensitivity occurs in the mainly arid region of Southern Africa (Supplementary Fig. 1). Here, a + 1 °C shift in the Niño 3.4 index causes a mean change in the NPP supply of  $-6.6 \text{ g C m}^{-2} \text{ yr}^{-1}$ . El Niño events in Southern Africa are associated with dry conditions, while La Niña events are associated with wet conditions. Most land cover types in Southern Africa exhibit negative NPP supply values relative to changes in the Niño 3.4 index (Fig. 3). The exceptions, with either the median value or a large number of positive outliers, are the region’s forests and woodlands that are adapted to prolonged dry seasons or droughts, and possess physiological mechanisms such as extensive roots allowing efficient deep water access or are drought deciduous (i.e. the trees lose leaves to conserve water)



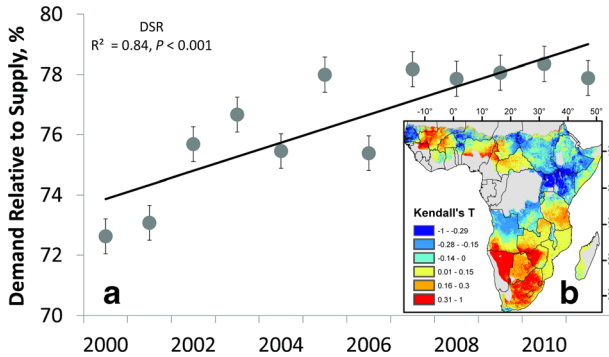
**Fig. 3** Relationship between ENSO and NPP supply (2000–2013). Change in NPP supply per GlobCover land cover class relative to a +1 °C change in the Niño 3.4 index anomaly for 2000–2013 ( $n = 7927$ ). Despite the general response of each region to change in the Niño 3.4 anomaly, the presence of a large number of outliers in certain land cover classes could mean that there are underlying physiological adaptations (e.g. water-storing and/or deep roots systems, drought deciduous, etc.) that surmount the impact of climate

(Nicholson 2011). Despite the fact that there were more La Niña events than El Niño events between 2000 and 2011, the negative impact of El Niño on Southern Africa is strong enough to tip the balance toward the negative (Supplementary Fig. 4). This sensitivity, coupled with a  $1.3 \text{ g C m}^{-2} \text{ yr}^{-1}$  trend in NPP demand, increases demand relative to available supply (Fig. 4a and b). This is troubling because the difference in NPP supply in Southern Africa between El Niño and La Niña years corresponds to what is required to feed approximately 15 million people for one year (Stige et al. 2006).

### 3.3 Demand-supply balance of NPP in food producing regions

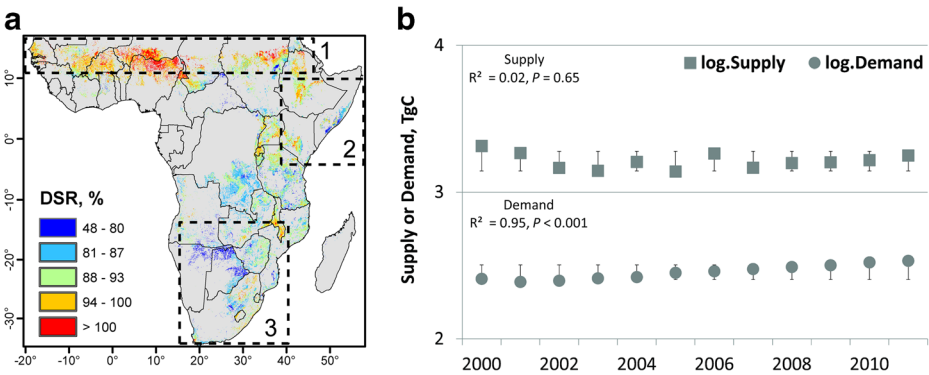
Food production in sub-Saharan drylands is almost entirely dependent on rain-fed agriculture (You et al. 2011). The median response of NPP supply in rain-fed croplands to a +1 °C change in the Niño 3.4 region is  $-2 \text{ g C m}^{-2} \text{ yr}^{-1}$  in the Sahel,  $3 \text{ g C m}^{-2} \text{ yr}^{-1}$  in East Africa, and  $-7 \text{ g C m}^{-2} \text{ yr}^{-1}$  in Southern Africa (Fig. 3). Average DSR within rain-fed croplands is high ( $\mu = 0.9 \pm 0.1$ ), with a large spatial variability (Fig. 5a). In Sahel, East and Southern Africa NPP, demand in croplands, which also includes associated villages and settlements, has been increasing at a rate of 1.35 % per year ( $P < 0.001$ ), while supply has been marginally decreasing at a rate of 0.2 % per year ( $P = 0.65$ ) (Fig. 5b).

These observations reinforce reports of persistent undernourishment in sub-Saharan Africa as approximately 90 % of consumption comes from domestic production (Barrett and Upton 2013). Rain-fed croplands occupy most of the agricultural landscape in sub-Saharan drylands and domestic crop production is strongly linked to cropland NPP (Supplementary Fig. 5). In sub-Saharan drylands, increases in crop production are generally achieved by expanding agricultural land through savanna burning, the spatial patterns of which are determined by the



**Fig. 4** Trend in DSR and its correlation with ENSO (2000–2011). **a** Annual trend of the demand-supply ratio expressed as percent across sub-Saharan drylands; **b** Spatial pattern of the correlation between DSR and the Niño-3.4 sea surface temperature index. A positive DSR–Niño 3.4 index correlation signifies decreasing NPP supply relative to demand as Niño 3.4 index values increase (i.e. anomalously warm conditions in the central equatorial Pacific). Negative DSR–Niño 3.4 index correlation means increasing NPP supply relative to demand as Niño 3.4 index values increase. Demand for NPP is always increasing and parallels the rate of population growth. The *error bars* represent standard error of the mean

ENSO-controlled rainfall regime (Andela and van der Werf 2014). However, despite observed increases in cropland extent in several parts of the continent, yields per unit area for major food crops remain low (Bekunda et al. 2010). Additionally, variability of crop yields in several parts of sub-Saharan Africa can be attributed to ENSO. For example, 64 % of the yield variability of maize in Zimbabwe could be accounted for by ENSO with yield predictions up to a full year before harvest (Cane et al. 1994). Considering these challenges, increasing crop yield means increasing resilience of croplands to the impact of ENSO and other stressors through accurate forecasting and improved land and water management strategies. Water management in particular is vital for crop production and is one of the most important factors required to improve livelihoods in sub-Saharan dryland agro-ecosystems (Sissoko et al. 2011).



**Fig. 5** NPP supply and demand trends in food-producing areas (2000–2011). **a** Spatial pattern of cropland demand-supply ratio expressed as percent. The *dashed boxes* denote the high aridity regions of the Sahel (a1), East Africa (a2) and Southern Africa (a3). See Supplementary Fig. 1 for the regional aridity map; **b** Mean annual trend in NPP supply and demand over cropland areas in the Sahel, East and Southern Africa. The *error bars* represent standard error of the mean

NPP supply deficiency is exacerbated in sub-Saharan drylands by large-scale, trans-national land acquisitions, whereby investors from countries rich in financial capital purchase or lease land from developing countries for the production of goods (Seaquist et al. 2014). These deals often involve projects that maximize crop yield in purchased land using expensive technologies providing crops, biofuel feedstock and wood charcoal to markets outside the region of production (Seaquist et al. 2014). The 1.3 million km<sup>2</sup> of reported deals deplete household income from agricultural production and lead to the displacement of communities (Zetland and Möller-Gulland 2013). Consequently, DSR increases as the consumable supply of NPP is reduced and local resources are depleted to satisfy demand elsewhere (Yengoh and Armah 2015). This external demand for productive land is also an important driver of land degradation and deforestation. Land is acquired to provide maximum return on investment, and thus it is often intensively managed through year-round planting, and excessive use of pesticides and inorganic fertilizers, all factors that contribute to land degradation (Robertson and Pinstrup-Andersen 2010). The negative effects of deforestation are particularly pronounced in East Africa, where 91 % of the region exhibits an increasing DSR trend ( $\mu = 0.12 \pm 0.10$ ). Rural household energy in East Africa is largely satisfied by wood fuels with around 90 million people living in areas where demand is high and wood harvest unsustainable (Bailis et al. 2015). In countries where there is little or no government regulation the exploitation of local NPP supply to meet external demand is unrestricted. For example, demand for wood charcoal in the Persian Gulf countries drives a 1.4 % annual loss of tree cover in Somalia (Bolognesi et al. 2015).

### 3.4 Limitations

Although DSR provides an indicator of pressures exerted on ecosystem services at large scales, it must be used in combination with other data. This is particularly important at local scales where coarse resolution data cannot capture critical biophysical and socio-ecological processes that occur at higher resolutions. A possible limitation in our approach is the reliance on FAOSTAT data to estimate NPP demand. FAO has traditionally relied on the quality of data provided by national statistical institutions with minimal quality control. However, in recent years the agency has been taking steps through its regional offices to intensify data control and harmonize collection, processing and dissemination with various national partner agencies (FAO 2011). The quantification of human vulnerability to food insecurity is complex and metrics such as those provided by FAOSTAT have been criticized for being poor predictors (Barrett 2010). We addressed this critique by: (1) using household consumption surveys to apply appropriate ratios distinguishing between per capita urban and rural consumption for each component of NPP demand, and (2) spatially constraining these ratios to gridded population data.

## 4 Conclusions

In this paper we focused on the El Niño-Southern Oscillation (ENSO) and its impact on the balance between supply and demand of net primary productivity (NPP) in African drylands. Our analyses demonstrated that fluctuations in the supply of NPP associated with a + 1 °C change in the Niño 3.4 region average  $-2.8 \text{ g C m}^{-2} \text{ yr}^{-1}$  and population and socioeconomic-driven trend in NPP demand averages  $3.5 \text{ g C m}^{-2} \text{ yr}^{-1}$ . The combination of reductions in

supply and increases in demand lead to a 7.2 % increase in the demand for NPP relative to its supply. Our findings highlight the role played by ENSO and population growth in modulating the balance between supply and demand of NPP in sub-Saharan drylands. Our findings also emphasize the importance of accounting for this balance, which has so far been overlooked in climate impact studies.

Humans rely directly on the supply of NPP through the consumption of crops and use of wood for fuel and construction, and indirectly through animal products. This reliance creates demand that drives many of the ecological changes occurring in sub-Saharan drylands. Evaluating the socio-ecological impact of ENSO and other large-scale ocean-atmosphere teleconnections through isolated disciplinary analysis provides monocular views of a complex system that requires an integrated approach. Moreover, several of the factors that influence the balance between supply and demand, such as population density and consumption patterns, are dependent on scale. Sociological data, such as surveys at the household (or even individual) level, which provide valuable information about fine-scale patterns of human-ecosystem interaction, are seldom integrated with biophysical datasets. Thus, a comprehensive, interdisciplinary approach is required to further assess the factors driving this complex balance in the wake of climate change. Only through interdisciplinary analysis involving enhanced synthesis of both biophysical and socio-ecological data can we make improved assessments of the impacts of climatic variability on human livelihood and wellbeing.

**Acknowledgments** We thank Dan Metcalfe, Lina Eklund, A.J. (Han) Dolman, and Katharina Waha for their insight and comments during early stages of the manuscript. We also thank the programming assistance provided by the volunteers at the *Stack Overflow* and *Cross Validated* online communities. Funding for this project was provided by the Swedish National Space Board (contract no. 100/11 to J.A.). A.M.A. received support from the Royal Physiographic Society in Lund and the Lund University Center for Studies of Carbon Cycle and Climate Interactions (LUCCI). C.C.U. was supported by NSF grant OCE-1203892.

## References

- Abdi AM, Seaquist J, Tenenbaum DE, Eklundh L, Ardo J (2014) The supply and demand of net primary production in the Sahel. *Environ Res Lett* 9:094003
- Abdissa F, Degefa T (2011) Urbanization and changing livelihoods: the case of farmers' displacement in the expansion of Addis Ababa. In: Teller C (ed) *The demographic transition and development in Africa: the unique case of Ethiopia*. Springer Netherlands, Dordrecht, pp. 215–235
- Adujna A, Hailemariam A (2011) Rural–urban linkages in Ethiopia: insuring rural livelihoods and development of urban centers. In: Teller C (ed) *The demographic transition and development in Africa*. Springer, Netherlands, pp. 167–186
- Ahlström A, Raupach MR, Schurgers G, Smith B, Armeth A, Jung M, Reichstein M, Canadell JG, Friedlingstein P, Jain AK, Kato E, Poulter B, Sitch S, Stocker BD, Viovy N, Wang YP, Wiltshire A, Zaehle S, Zeng N (2015) The dominant role of semi-arid ecosystems in the trend and variability of the land CO<sub>2</sub> sink. *Science* 348:895–899
- Andela N, van der Werf GR (2014) Recent trends in African fires driven by cropland expansion and el Nino to La Nina transition. *Nat Clim Chang* 4:791–795
- Bailis R, Drigo R, Ghilardi A, Masera O (2015) The carbon footprint of traditional woodfuels. *Nat Clim Chang* 5:266–272
- Barrett CB (2010) Measuring food insecurity. *Science* 327:825–828
- Barrett CB, Upton JB (2013) Food security and sociopolitical stability in sub-Saharan Africa. Food security and sociopolitical stability. Oxford University Press, New York
- Battisti DS, Naylor RL (2009) Historical warnings of future food insecurity with unprecedented seasonal heat. *Science* 323:240–244
- Bekunda M, Sanginga N, Woomeer PL (2010) Restoring soil fertility in sub-Sahara Africa. In Donald LS (ed.) *Advances in agronomy*. Academic Press, pp. 183–236

- Bolognesi M, Vrieling A, Rembold F, Gadain H (2015) Rapid mapping and impact estimation of illegal charcoal production in southern Somalia based on WorldView-1 imagery. *Energy Sustain Dev* 25:40–49
- Cai W, Santoso A, Wang G, Yeh S-W, An S-I, Cobb KM, Collins M, Guilyardi E, Jin F-F, Kug J-S, Lengaigne M, McPhaden MJ, Takahashi K, Timmermann A, Vecchi G, Watanabe M, Wu L (2015) ENSO and greenhouse warming. *Nat Clim Chang* 5:849–859
- Campbell MM, Casterline J, Castillo F, Graves A, Hall TL, May JF, Perlman D, Potts M, Speidel JJ, Walsh J, Wehner MF, Zulu EM (2014) Population and climate change: who will the grand convergence leave behind? *The Lancet Global Health* 2:e253–e254
- Cane MA, Eshel G, Buckland RW (1994) Forecasting Zimbabwean maize yield using eastern equatorial Pacific Sea surface temperature. *Nature* 370:204–205
- Cheung Y-W, de Haan J, Qian X, Yu S (2012) China's outward direct investment in Africa. *Rev Int Econ* 20:201–220
- Eozenou PH-V, Madani D, Swinkels R (2013) Poverty, malnutrition and vulnerability in Mali. World Bank Policy Research Working Paper No. 6561. The World Bank, Washington, DC
- FAO (2011) Review of the availability and quality of official data from African commission on agricultural statistics member countries. Food and agriculture Organization of the United Nations, Addis Ababa, Ethiopia
- FAO (2013) CountrySTAT Mali. Statistics Division, Food and Agriculture Organization of the United Nations Rome, Italy
- FAOSTAT (2015) FAO statistical databases. Food and agriculture Organization of the United Nations, Rome, Italy
- Fetzel T, Niedertscheider M, Haberl H, Krausmann F, Erb K-H (2016) Patterns and changes of land use and land-use efficiency in Africa 1980–2005: an analysis based on the human appropriation of net primary production framework. *Reg Environ Change* 16:1507–1520
- FEWSNET (2016) Southern Africa: illustrating the extent and severity of the 2015–16 drought. Famine Early Warning Systems Network/USAID
- Giannini A, Biasutti M, Held IM, Sobel AH (2008) A global perspective on African climate. *Clim Chang* 90: 359–383
- Greve P, Orlowsky B, Mueller B, Sheffield J, Reichstein M, Seneviratne SI (2014) Global assessment of trends in wetting and drying over land. *Nat Geosci* 7:716–721
- IPCC (2014) Climate Change 2014: Impacts, Adaptation, and Vulnerability. Part B: Regional Aspects. Contribution of Working Group II to the Fifth Assessment Report of the Intergovernmental Panel on Climate Change. Cambridge, United Kingdom and New York, NY, USA
- Itannam F, Olsson M (2004) Land degradation in Addis Ababa due to industrial and urban development. *Ethiopian J Dev Res* 26:77–100
- Knox J, Hess T, Daccache A, Wheeler T (2012) Climate change impacts on crop productivity in Africa and South Asia. *Environ Res Lett* 7:034032
- Korecha D, Barnston AG (2007) Predictability of June–September rainfall in Ethiopia. *Mon Weather Rev* 135: 628–650
- Korecha D, Sorteberg A (2013) Validation of operational seasonal rainfall forecast in Ethiopia. *Water Resour Res* 49:7681–7697
- Linard C, Gilbert M, Snow RW, Noor AM, Tatem AJ (2012) Population distribution, settlement patterns and accessibility across Africa in 2010. *PLoS One* 7:e31743
- Mann HB (1945) Nonparametric tests against trend. *Econometrica*:245–259
- Maxwell D, Fitzpatrick M (2012) The 2011 Somalia famine: context, causes, and complications. *Global Food Security* 1:5–12
- Moller LC (2012) The Ethiopian urban migration study 2008: the characteristics, motives and outcomes to immigrants to Addis Ababa. The World Bank, Washington, DC
- Monteith JL (1972) Solar radiation and productivity in tropical ecosystems. *J Appl Ecol* 9:747–766
- Nicholson SE (2011) Dryland climatology. Cambridge University Press
- Philippon N, Martiny N, Camberlin P, Hoffman MT, Gond V (2014) Timing and patterns of the ENSO signal in Africa over the last 30 Years: insights from normalized difference vegetation index data. *J Clim* 27:2509–2532
- Pires M (2003) The spatial polarization of woodfuel supply and demand in Senegal. *African Geographical Review* 22:29–47
- Reda DT, Engida AN, Asfaw DH, Hamdi R (2015) Analysis of precipitation based on ensembles of regional climate model simulations and observational databases over Ethiopia for the period 1989–2008. *Int J Climatol* 35:948–971
- Robertson B, Pinstrip-Andersen P (2010) Global land acquisition: neo-colonialism or development opportunity? *Food Sec* 2:271–283
- Running SW (2012) A measurable planetary boundary for the biosphere. *Science* 337:1458–1459



- Seaquist JW, Johansson EL, Nicholas KA (2014) Architecture of the global land acquisition system: applying the tools of network science to identify key vulnerabilities. *Environ Res Lett* 9:114006
- Sissoko K, van Keulen H, Verhagen J, Tekken V, Battaglini A (2011) Agriculture, livelihoods and climate change in the west African Sahel. *Reg Environ Chang* 11:119–125
- Stige LC, Stave J, Chan K-S, Ciannelli L, Pettorelli N, Glantz M, Herren HR, Stenseth NC (2006) The effect of climate variation on agro-pastoral production in Africa. *Proc Natl Acad Sci U S A* 103:3049–3053
- van Vuuren DP, Edmonds J, Kainuma M, Riahi K, Thomson A, Hibbard K, Hurtt GC, Kram T, Krey V, Lamarque J-F, Masui T, Meinshausen M, Nakicenovic N, Smith SJ, Rose SK (2011) The representative concentration pathways: an overview. *Clim Chang* 109:5–31
- Wilcox R (2012) Chapter 10 - robust regression. *Introduction to robust estimation and hypothesis testing*, Third edn. Academic Press, Boston, pp. 471–532
- Wolde-Georgis T (ed) (2002) *The impact of cold events on Ethiopia*. United Nations University Press, New York, NY
- Yengoh G, Armah F (2015) Effects of large-scale acquisition on food insecurity in Sierra Leone. *Sustainability* 7: 9505
- You L, Ringler C, Wood-Sichra U, Robertson R, Wood S, Zhu T, Nelson G, Guo Z, Sun Y (2011) What is the irrigation potential for Africa? A combined biophysical and socioeconomic approach. *Food Policy* 36:770–782
- Zetland D, Möller-Gulland J (2013) The political economy of land and water grabs. In: Allan JA, Keulertz M, Sojamo S, Warner J (eds) *Handbook of land and water grabs in Africa: foreign direct investment and food and water security*. Routledge, New York, NY
- Zhao M, Running S, Heinsch FA, Nemani R (2011) MODIS-derived terrestrial primary production. In: Ramachandran B, Justice CO, Abrams MJ (eds) *Land remote sensing and global environmental change*. Springer, New York, pp. 635–660
- Zulu LC (2010) The forbidden fuel: charcoal, urban woodfuel demand and supply dynamics, community forest management and woodfuel policy in Malawi. *Energy Policy* 38:3717–3730



**The El Niño – La Niña cycle and recent trends in supply and demand of net primary productivity in African drylands**

A. M. Abdi <sup>1,\*</sup>, A. Vrieling <sup>2</sup>, G. T. Yengoh <sup>3</sup>, A. Anyamba <sup>4</sup>, J. W. Seaquist <sup>1</sup>, C. C. Ummenhofer <sup>5</sup>, J. Ardö <sup>1</sup>

<sup>1</sup> Department of Physical Geography and Ecosystem Science, Lund University, Sölvegatan 12, 22362 Lund, Sweden

<sup>2</sup> University of Twente, Faculty of Geo-information Science and Earth Observation, P.O. Box 217, 7500 AE Enschede, The Netherlands

<sup>3</sup> Lund University Center for Sustainability Studies, 22362 Lund, Sweden

<sup>4</sup> National Aeronautics and Space Administration, Goddard Space Flight Center, Biospheric Sciences Laboratory, Greenbelt, Maryland, United States of America

<sup>5</sup> Department of Physical Oceanography, Woods Hole Oceanographic Institution, Woods Hole, Massachusetts, United States of America

\* Corresponding author. E-mail: hakim.abdi@gmail.com. Tel: +46462223132. Fax: +46462220321

### Derivation of the aridity index

For each year between 2000 and 2013 we calculated an aridity index (AI) from the ratio between annual rainfall data from the Climate Hazards Group InfraRed Precipitation with Station data (Funk et al., 2014) (<http://chg.geog.ucsb.edu/data/chirps/>) and satellite-derived potential evapotranspiration from the MOD16 project (Mu et al., 2011) (<http://www.ntsug.umt.edu/project/mod16>). Arid (ARD,  $0.05 < AI < 0.20$ ), semi-arid (SARD,  $0.20 < AI < 0.50$ ), and dry sub-humid (DSH,  $0.50 < AI < 0.65$ ) areas were delineated. Altogether, drylands cover 14.7 million km<sup>2</sup> of Africa (Supplementary Fig. 1).

### Disaggregation of annual NPP supply to monthly intervals

The MODIS data used are provided as monthly satellite-derived GPP (MOD17A2) and annual NPP (MOD17A3) at the same spatial resolution. We multiplied monthly GPP with the 14-year (2000 – 2013) mean NPP/GPP ratio to get an estimate of monthly NPP:

$$NPP_{monthly} = GPP_{monthly} \times \left[ \frac{NPP}{GPP} \right]_{2000-2013} \quad (1)$$

To test whether our derived monthly NPP supply data were within reasonable values, we aggregated them into annual sums, and compared them against the MOD17A3 product using root mean square error (RMSE) and mean absolute error (MAE). The monthly NPP derived using this approach had mean RMSE and MAE of 32 gCm<sup>-2</sup>yr<sup>-1</sup> and 27 gCm<sup>-2</sup>yr<sup>-1</sup>, respectively (Supplementary Fig. 6). Since the purpose of temporally disaggregating annual MOD17A3 data to monthly time steps was to compare it to the monthly Niño-3.4 index, we find these error estimates to be acceptable as they are lower than errors associated with other large-scale primary productivity estimates e.g. Jung et al. (2011) and Maselli et al. (2006).

### **Calculation of cropland NPP and crop production statistics**

A detailed cropland mask (<ftp://mars.jrc.ec.europa.eu/Public/cropmask>) developed at the Joint Research Centre of the European Commission (Vancutsem et al., 2012) was used to quantify NPP anomalies within rain-fed croplands in sub-Saharan drylands. Compared to existing crop maps, this dataset has a larger agreement with a high-resolution validation sample in areas where cropland represents more than 30% of a pixel. Pearson's product-moment correlation exhibited a strong relationship between log-transformed cropland NPP and primary crop production between 2000 and 2013 (Pearson's  $r = 0.54$ ,  $P < 0.01$ ) (Supplementary Fig. 5). Only cropland found in the arid, semiarid and dry subhumid areas were considered (Supplementary Table 7).

## SUPPLEMENTARY INFORMATION

**Supplementary Table 1.** Conversion rates of products derived from food-producing animals. A ratio of 0.45 was used to convert dry matter requirement into carbon.

<b>Type</b>	<b>Dry Matter Requirement (Kg)</b>	<b>Reference</b>
Beef	6.5	Bradford (1999)
Camel	12	Eltahir et al. (2011)
Eggs	4	Haberl et al. (2007)
Milk, whole	1.5	Hutjens (2005)
Mutton/Goat	6.3	Karim et al. (2002)
Pigmeat	8.5	Wirsenius (2000)
Poultry	5.5	"

## SUPPLEMENTARY INFORMATION

**Supplementary Table 2.** Dry matter and carbon content of the 27 types of crops selected for inclusion into the consumption module.

Crop	Dry Matter Content (%)	Carbon Content (%)	Reference
Bananas	35	45	IIASA/FAO (2012)
Barley	88	47	Pradhan et al. (2013)
Beans, dry	90	47	“
Cassava	38	44	“
Cereals, other	85	47	“
Dates	15	45	“
Fruits	15	45	Goudriaan et al. (2001)
Grapes	15	45	Pradhan et al. (2013)
Groundnuts	95	60	IIASA/FAO (2012)
Maize	85	49	Goudriaan et al. (2001)
Millet	88	48	“
Onions, dry	15	45	Pradhan et al. (2013)
Oranges	15	45	“
Plantains	35	45	“
Potatoes	25	44	Goudriaan et al. (2001)
Pulses	90	47	“
Rice	88	48	“
Roots/tubers	30	44	Pradhan et al. (2013)
Sorghum	88	48	Goudriaan et al. (2001)
Soybeans	92	52	“
Sugar beet	21	44	“
Sugar cane	27	48	“
Sweet potatoes	30	44	IIASA/FAO (2012)
Tomatoes	15	45	Pradhan et al. (2013)
Vegetables	13	46	Goudriaan et al. (2001)
Wheat	87	47	IIASA/FAO (2012)
Yams	35	44	Pradhan et al. (2013)

## SUPPLEMENTARY INFORMATION

**Supplementary Table 3.** Conversion factors derived from FAOSTAT (2015); Houerou and Hoste (1977); Jahnke (1982). For each livestock type to its equivalent tropical livestock unit and the annual amount of dry matter feed each type requires for maintenance.

<b>Livestock Type</b>	<b>Tropical Livestock Unit Equivalent</b>	<b>Annual Dry Matter Requirement (Kg)</b>
Camels	1.00	2372
Cattle	0.70	1660
Chickens	0.01	23.72
Goats	0.10	237
Pigs	0.20	474
Sheep	0.10	237

## SUPPLEMENTARY INFORMATION

**Supplementary Table 4.** Residue factors for selected crops derived using data from Haberl et al. (2007) and Wirsenius (2000). Residue factors are the proportion of total crop phytomass that does not contribute to the crop yield. The inverse of the residue factor is the harvest index.

<b>Crop</b>	<b>Residue Factor</b>
Bananas	0.45
Barley	0.65
Cassava	0.80
Cereals, other	0.60
Dates	0.85
Fruits	0.85
Grapes	0.85
Groundnuts	0.60
Maize	0.78
Millet	0.80
Oranges	0.85
Plantains	0.45
Potatoes	0.50
Pulses	0.40
Rice	0.60
Roots and tubers	0.50
Sorghum	0.78
Soybeans	0.60
Sugar beet	0.70
Sugar cane	0.40
Sweet potatoes	0.50
Wheat	0.70
Yams	0.50



## SUPPLEMENTARY INFORMATION

**Supplementary Table 5.** Conversion factors for different types of woodfuels. FAOSTAT

provides non-coniferous and coniferous fuel wood in cubic meters, while wood charcoal is given in tonnes of dry matter.

<b>Wood fuel Type</b>	<b>Conversion Type</b>	<b>Conversion Factor</b>	<b>Reference</b>
Non-coniferous fuel wood	m <sup>3</sup> → dry matter	0.58	Brown (1997), Penman et al. (2003)
Coniferous fuel wood	m <sup>3</sup> → dry matter	0.43	Brown (1997), Penman et al. (2003)
Wood charcoal	dry matter → carbon	0.75	Girard (2002)

**SUPPLEMENTARY INFORMATION**

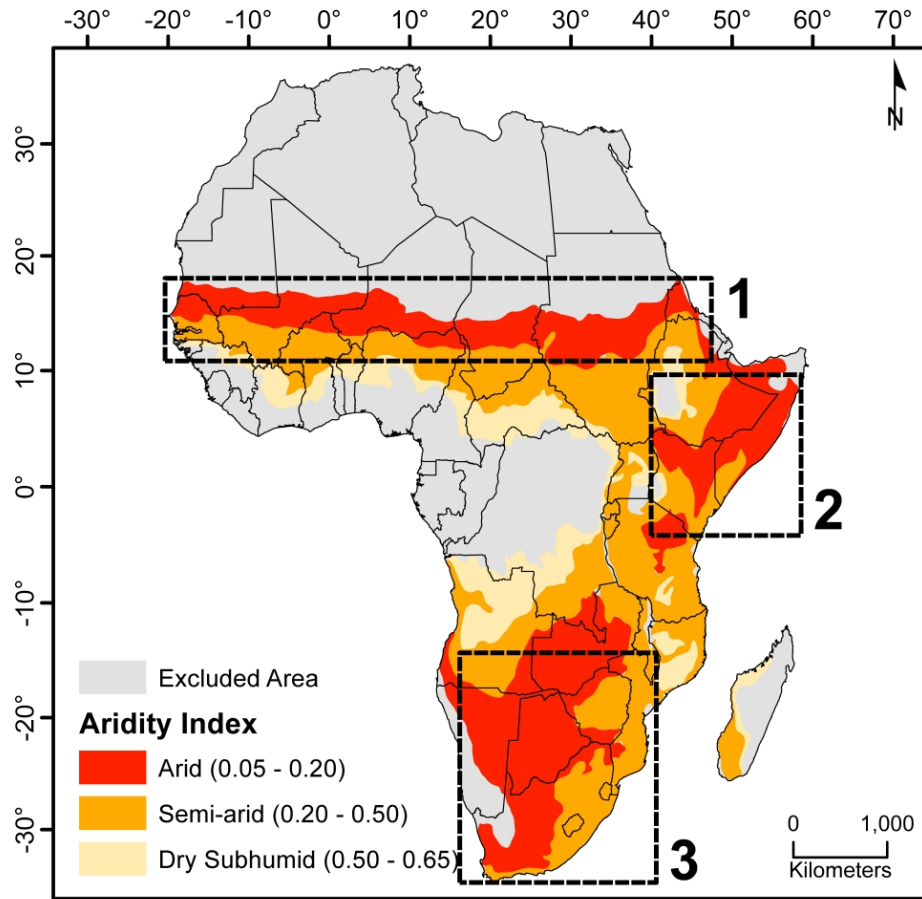
**Supplementary Table 6.** Sources of the ratio factors for urban and rural consumption of the components of NPP demand.

<b>Urban/Rural Consumption</b>	<b>Reference</b>
Peer-reviewed Literature	Hartter and Boston (2008), Marufu et al. (1997), Reardon (1993), Teklu (1996)
<b>National Household Consumption Surveys</b>	
Burundi	INSEE (2001)
Ethiopia	Tafere and Worku (2012)
Ghana	Ghana Statistical Service (2008)
Malawi	NSO (2012)
Nigeria	Maziya-Dixon et al. (2004)
Sudan	Food Security Technical Secretariat (2010)
Zambia	CSO (2012)

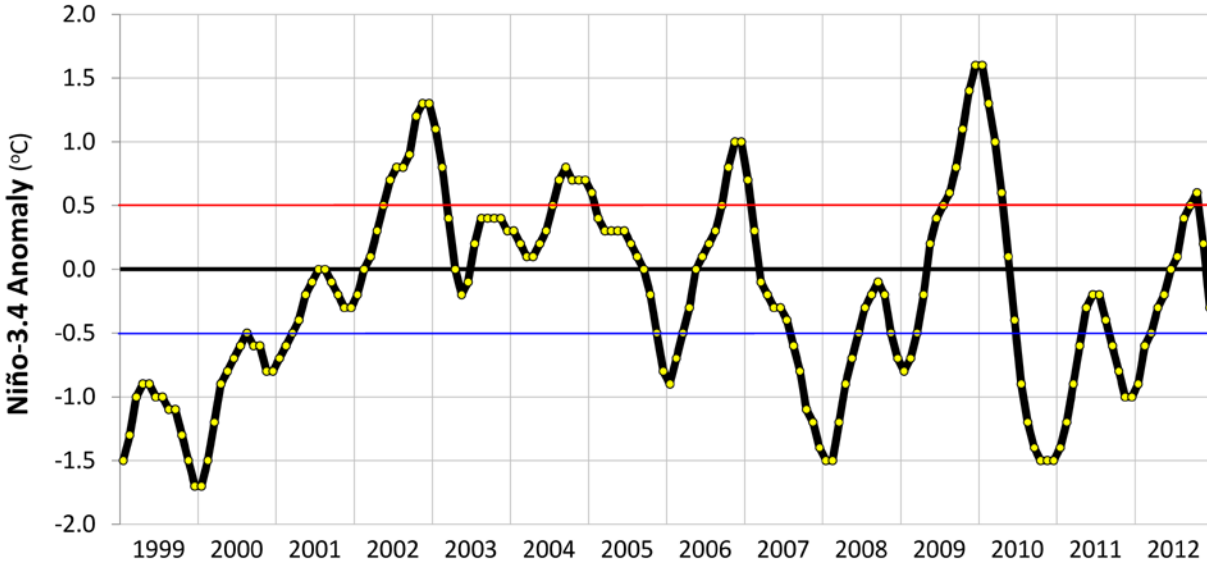
## SUPPLEMENTARY INFORMATION

**Supplementary Table 7.** Annual dry cropland NPP and FAOSTAT crop production for 2000 – 2013 in the descending order of cropland area. Annual NPP was extracted from croplands within arid, semi-arid and dry subhumid zones.

Country	Dry Cropland NPP, (TgC)	Crop Production, (Mt)	Dry Cropland area, (km <sup>2</sup> )
Congo, DRC	250	49	305,755
Tanzania	210	58	288,980
Sudan	44	45	286,990
Nigeria	28	340	190,815
Ethiopia	116	76	185,481
Zambia	115	14	161,100
South Africa	100	117	158,365
Mali	18	21	146,057
Niger	8	21	128,857
Chad	18	11	124,077
Mozambique	82	29	115,060
Burkina Faso	16	19	111,952
Zimbabwe	57	12	111,441
Botswana	39	0	105,597
Angola	64	31	90,359
Uganda	96	55	87,863
Kenya	63	39	85,870
Malawi	36	30	57,776
Somalia	11	3	56,633
Senegal	9	10	42,616
Namibia	16	1	39,378
Cameroon	7	36	37,942
Ghana	10	57	32,735
Ivory Coast	10	34	21,263
Burundi	18	10	19,580
Rwanda	17	17	17,312
Eritrea	1	1	16,559
Guinea	4	17	16,473
Central African Republic	7	4	14,818
Benin	3	19	14,685
Lesotho	3	1	7,037
Gambia	1	1	5,385
Togo	1	8	5,031
Swaziland	5	6	4,727
Guinea Bissau	1	2	4,506



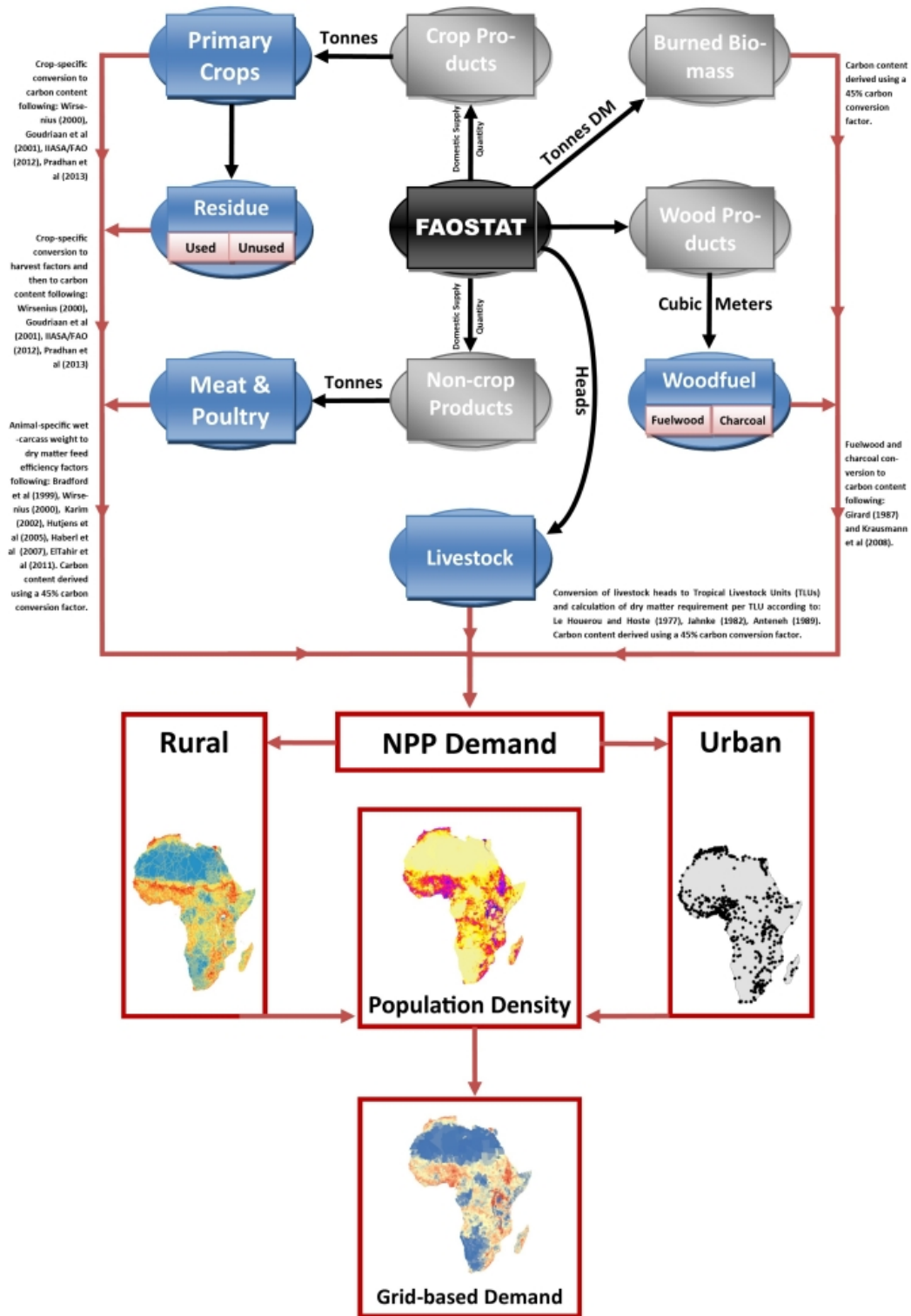
**Supplementary Fig. 1.** Aridity zones delineated from the ratio between annual rainfall and potential evapotranspiration. The boxes represent the three main high-aridity regions of the Sahel (1), East Africa (2) and Southern Africa (3).



**Supplementary Fig. 2.** Classification of ENSO years according to the NOAA the specification of a minimum of five consecutive 3-month running mean of the Extended Reconstructed Sea Surface Temperature version 3b (ERSST.v3b) anomalies in the Niño 3.4 region based on a threshold of  $\pm 0.5^{\circ}\text{C}$ . Red and blue lines denote El Niño and La Niña thresholds, respectively. Each yellow dot symbolizes a 3-month running mean. Note that, though included in the analysis, the 2005-2006 and 2008-2009 La Niña events were comparatively weak and short-lived, thus some definitions may not characterize them as an ENSO events. In both years negative sea surface temperature (SST) anomalies across the central and east-central equatorial Pacific Ocean met the threshold of  $-0.5^{\circ}\text{C}$  for exactly five consecutive 3-month periods (October-November-December to February-March-April).

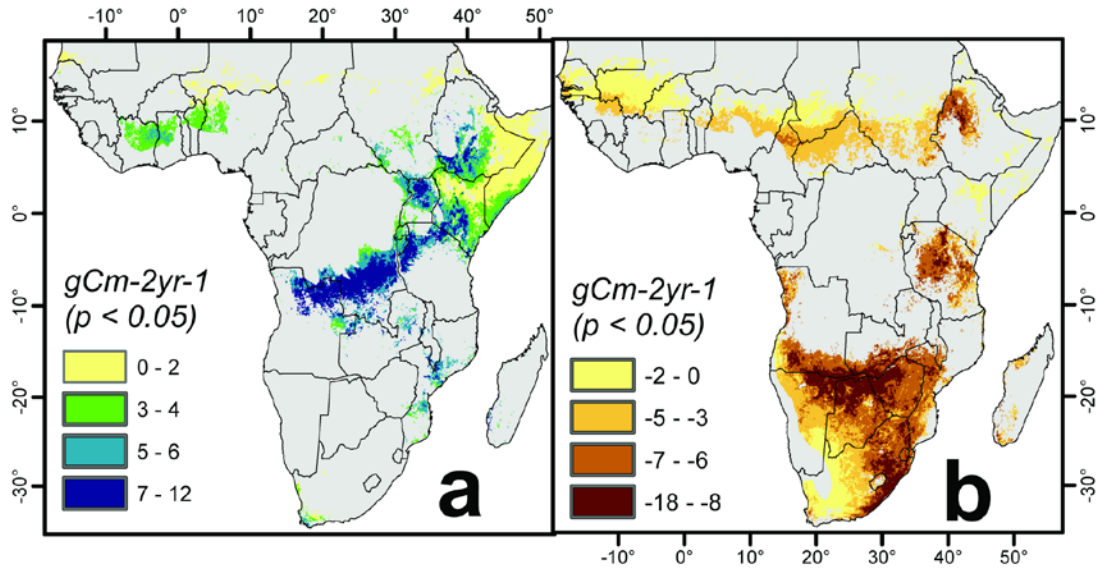
Data source: [http://www.cpc.ncep.noaa.gov/products/analysis\\_monitoring/ensostuff/ensoyears\\_ERSSTv3b.shtml](http://www.cpc.ncep.noaa.gov/products/analysis_monitoring/ensostuff/ensoyears_ERSSTv3b.shtml)

SUPPLEMENTARY INFORMATION

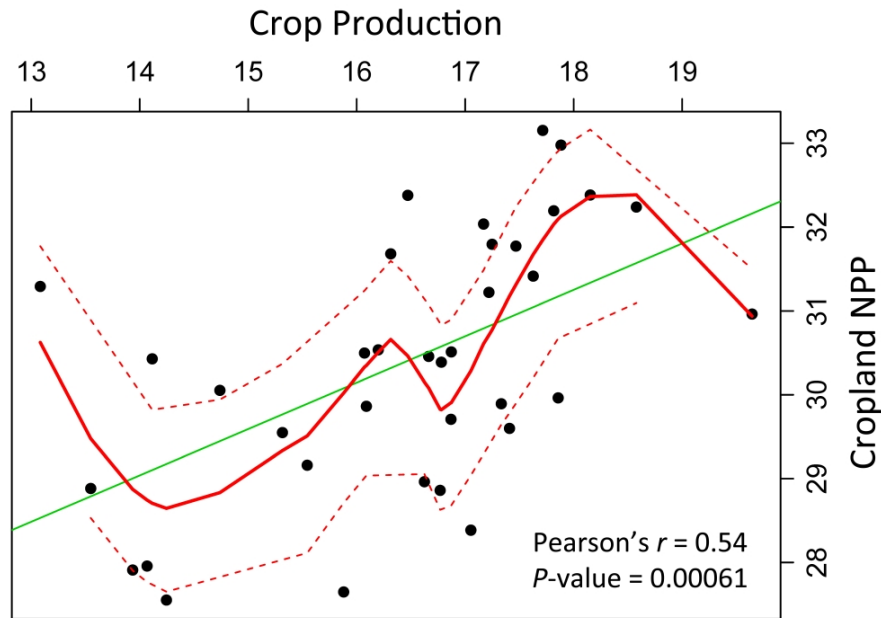


Supplementary Fig. 3. A visual representation of the framework for estimating demand for NPP.

**SUPPLEMENTARY INFORMATION**

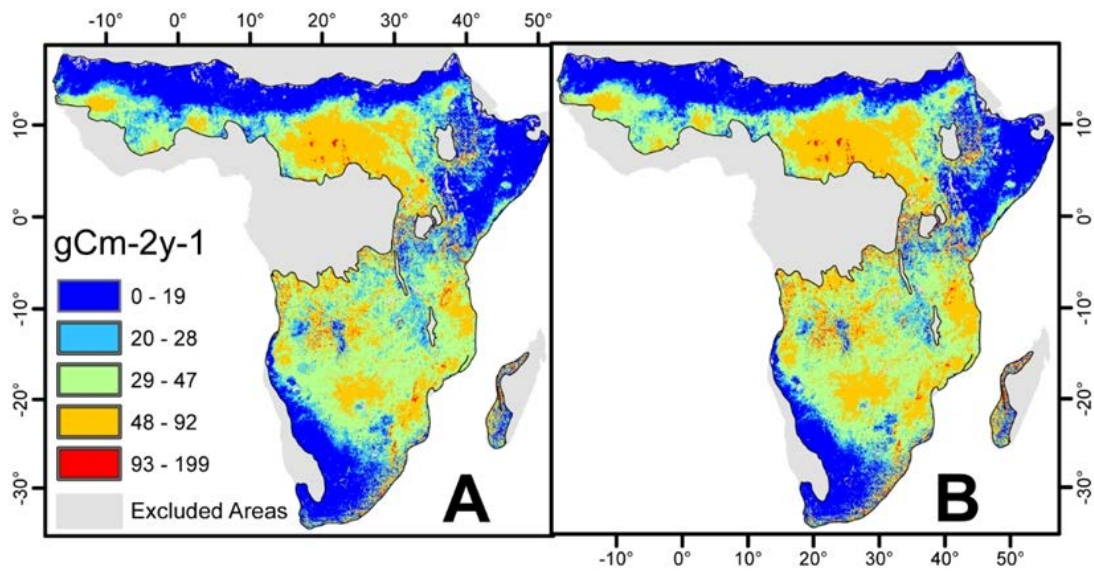


**Supplementary Fig. 4.** The output of maximum value compositing showing positive (a) and negative (b) correlations of ENSO and NPP supply. This represents change in NPP supply relative to a +1°C change in the Nino3.4 anomaly for 2000 – 2013.



**Supplementary Fig. 5.** Correlation between log-transformed dry cropland NPP and FAOSTAT annual crop production for 2000 – 2013. Each data point represents a country listed in Extended Table 2 and the crop data is an aggregate of the 27 crop types listed in Supplementary Table 1S.





**Supplementary Fig. 6.** Mean RMSE (a) and MAE (b) of annual aggregates of monthly NPP estimates compared to the MOD17A3 annual NPP product. The mean RMSE and MAE for all dryland regions were  $32 \text{ gCm}^{-2}\text{yr}^{-1}$  and  $27 \text{ gCm}^{-2}\text{yr}^{-1}$ , respectively.

**Supplementary References**

1. Bradford GE (1999) Contributions of animal agriculture to meeting global human food demand. *Livestock Production Science* 59:95-112.
2. Brown S (1997) Estimating biomass and biomass change of tropical forests: a primer. Food and Agriculture Organization, Rome, Italy.
3. CSO (2012) Living conditions monitoring survey report (2006 - 2010). Central Statistical Office, Republic of Zambia, Lusaka, Zambia.
4. Eltahir IE, Mohamed AM, El Khidir OA, Atta M (2011) Feedlot performance and carcass characteristics of Sudan dromedary camels (*Camelus dromedarius*) fed on molasses and sorghum grain based diets. *Journal of Camelid Science* 4:70-78.
5. FAOSTAT (2015) FAO Statistical Databases. Food and Agriculture Organization of the United Nations, Rome, Italy.
6. Food Security Technical Secretariat (2010) Food and Nutrition Security Assessment in Sudan: Analysis of the 2009 Baseline Household Survey. Ministry of Agriculture, Khartoum, Sudan.
7. Funk CC, Peterson PJ, Landsfeld MF, Pedreros DH, Verdin JP, Rowland JD, Romero BE, Husak GJ, Michaelsen JC, Verdin AP (2014) A Quasi-Global Precipitation Time Series for Drought Monitoring. USGS Data Series 832. U.S. Geological Survey, Sioux Falls, South Dakota.
8. Ghana Statistical Service (2008) Report of the Fifth Round. Ghana Living Standards Survey. Ghana Statistical Service, Accra, Ghana.
9. Girard P (2002) Charcoal production and use in Africa: what future? *Unasylva* 53:30-35.
10. Goudriaan J, Groot JJR, Uithol PWJ (2001) Productivity of Agro-ecosystems. in Roy J, Saugier B, Mooney HA (eds.) *Terrestrial Global Productivity*. Academic Press, San Diego, pp. 301-313.
11. Haberl H, Erb KH, Krausmann F, Gaube V, Bondeau A, Plutzar C, Gingrich S, Lucht W, Fischer-Kowalski M (2007) Quantifying and mapping the human appropriation of net primary production in earth's terrestrial ecosystems. *Proceedings of the National Academy of Sciences* 104:12942-12947.
12. Hartter J, Boston K (2008) Consuming Fuel and Fuelling Consumption: Modelling Human Caloric Demands and Fuelwood Use. *Small-scale Forestry* 7:1-15.
13. Houerou HNL, Hoste CH (1977) Rangeland Production and Annual Rainfall Relations in the Mediterranean Basin and in the African Sahelo-Sudanian Zone. *Journal of Range Management* 30:181-189.
14. Hutjens MF Dairy Efficiency and Dry Matter Intake. in *Proceedings of the 7th Western Dairy Management Conference*, Reno, Nevada. .
15. IIASA/FAO (2012) Global Agro-ecological Zones (GAEZ v3.0). IIASA, Laxenburg, Austria and FAO, Rome, Italy. .
16. INSEE (2001) Enquête Prioritaire 1998. Etude Nationale sur les Conditions de Vie des Populations. Institut de la Statistique et des Etudes Economiques, Bujumbura, Burundi.
17. Jahnke HE (1982) Livestock production systems and livestock development in tropical Africa. Kieler Wissenschaftsverlag Vauk Kiel, Kiel, Germany.
18. Jung M, Reichstein M, Margolis HA, Cescatti A, Richardson AD, Arain MA, Arneth A, Bernhofer C, Bonal D, Chen J, Gianelle D, Gobron N, Kiely G, Kutsch W, Lasslop G, Law BE, Lindroth A, Merbold L, Montagnani L, Moors EJ, Papale D, Sottocornola M,

## SUPPLEMENTARY INFORMATION

- Vaccari F, Williams C (2011) Global patterns of land-atmosphere fluxes of carbon dioxide, latent heat, and sensible heat derived from eddy covariance, satellite, and meteorological observations. *Journal of Geophysical Research: Biogeosciences* 116:G00J07.
19. Karim SA, Santra A, Verma DL (2002) Growth, feed conversion efficiency and carcass characteristics of Malpura and Malpura× Awassi crossbred lambs in a hot semi arid environment. *Asian-Australasian Journal of Animal Sciences* 15:377-381.
  20. Marufu L, Ludwig J, Andreae MO, Meixner FX, Helas G (1997) Domestic biomass burning in rural and urban Zimbabwe—Part A. Biomass and Bioenergy 12:53-68.
  21. Maselli F, Barbati A, Chiesi M, Chirici G, Corona P (2006) Use of remotely sensed and ancillary data for estimating forest gross primary productivity in Italy. *Remote Sensing of Environment* 100:563-575.
  22. Maziya-Dixon B, I.O. Akinyele, Oguntona EB, Nokoe S, Sanusi RA, Harris E (2004) Nigeria Food Consumption and Nutrition Survey, 2001-2003: Summary. International Institute of Tropical Agriculture, Ibadan, Nigeria.
  23. Mu Q, Zhao M, Running SW (2011) Improvements to a MODIS global terrestrial evapotranspiration algorithm. *Remote Sensing of Environment* 115:1781-1800.
  24. NSO (2012) Malawi Integrated Household Survey. Household Socioeconomic Characteristics Report National Statistical Office, Zomba, Malawi.
  25. Penman J, Gytarsky M, Hiraishi T, Krug T, Kruger D, Pipatti R, Buendia L, Miwa K, Ngara T, Tanabe K (2003) Good practice guidance for land use, land-use change and forestry. Institute for Global Environmental Strategies, Hayama, Japan.
  26. Pradhan P, K. B. Lüdeke M, E. Reusser D, P. Kropp J (2013) Embodied crop calories in animal products. *Environmental Research Letters* 8:044044.
  27. Reardon T (1993) Cereals demand in the Sahel and potential impacts of regional cereals protection. *World Development* 21:17-35.
  28. Tafere K, Worku I (2012) Consumption Patterns of Livestock Products in Ethiopia: Elasticity Estimates Using HICES (2004/05) Data. International Food Policy Research Institute, Washington, DC.
  29. Teklu T (1996) Food demand studies in Sub-Saharan Africa: a survey of empirical evidence. *Food Policy* 21:479-496.
  30. Vancutsem C, Marinho E, Kayitakire F, See L, Fritz S (2012) Harmonizing and combining existing land cover/land use datasets for cropland area monitoring at the African continental scale. *Remote Sensing* 5:19-41.
  31. Wirsenius S (2000) Human use of land and organic materials: modeling the turnover of biomass in the global food system, Chalmers University of Technology, Göteborg, Sweden.